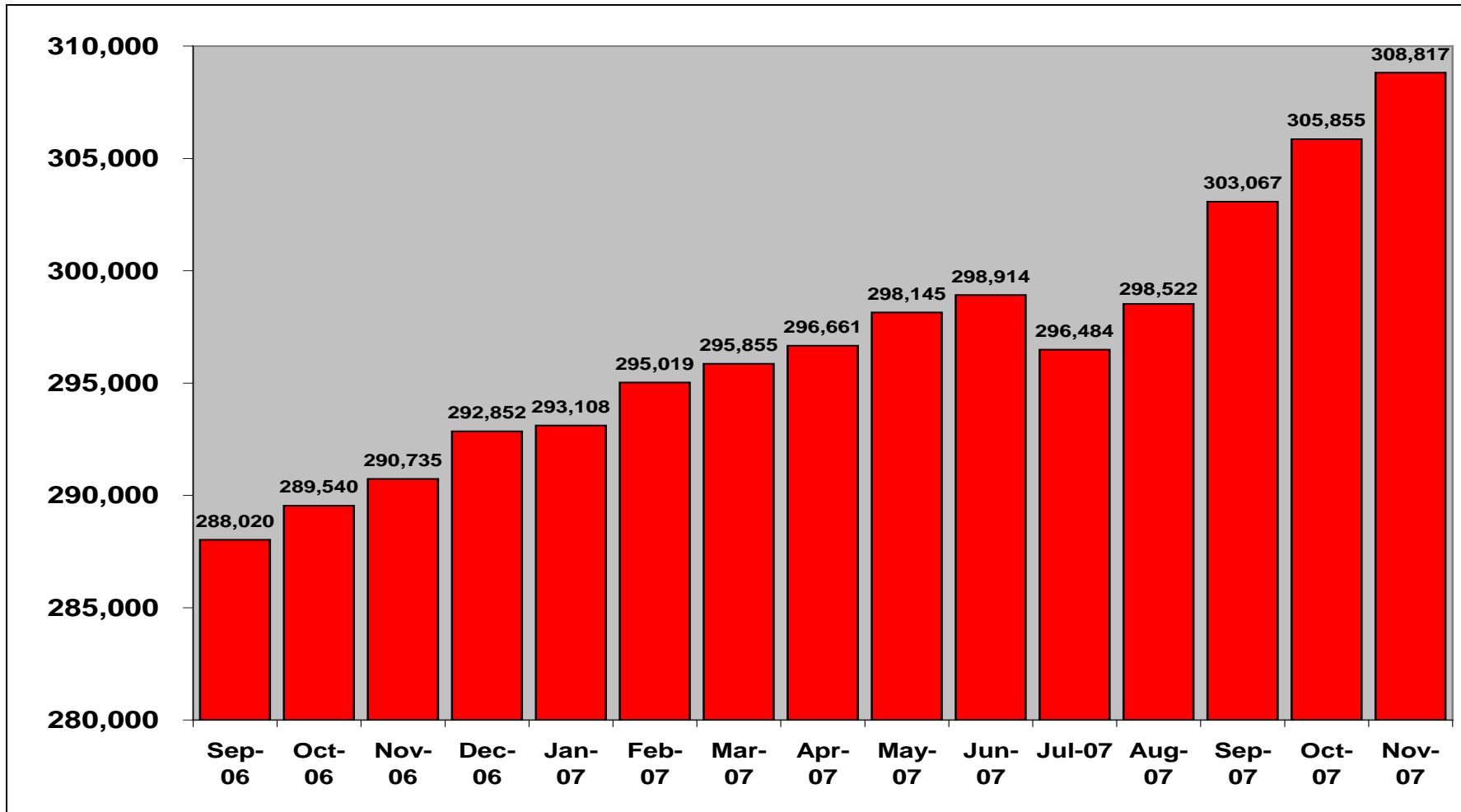




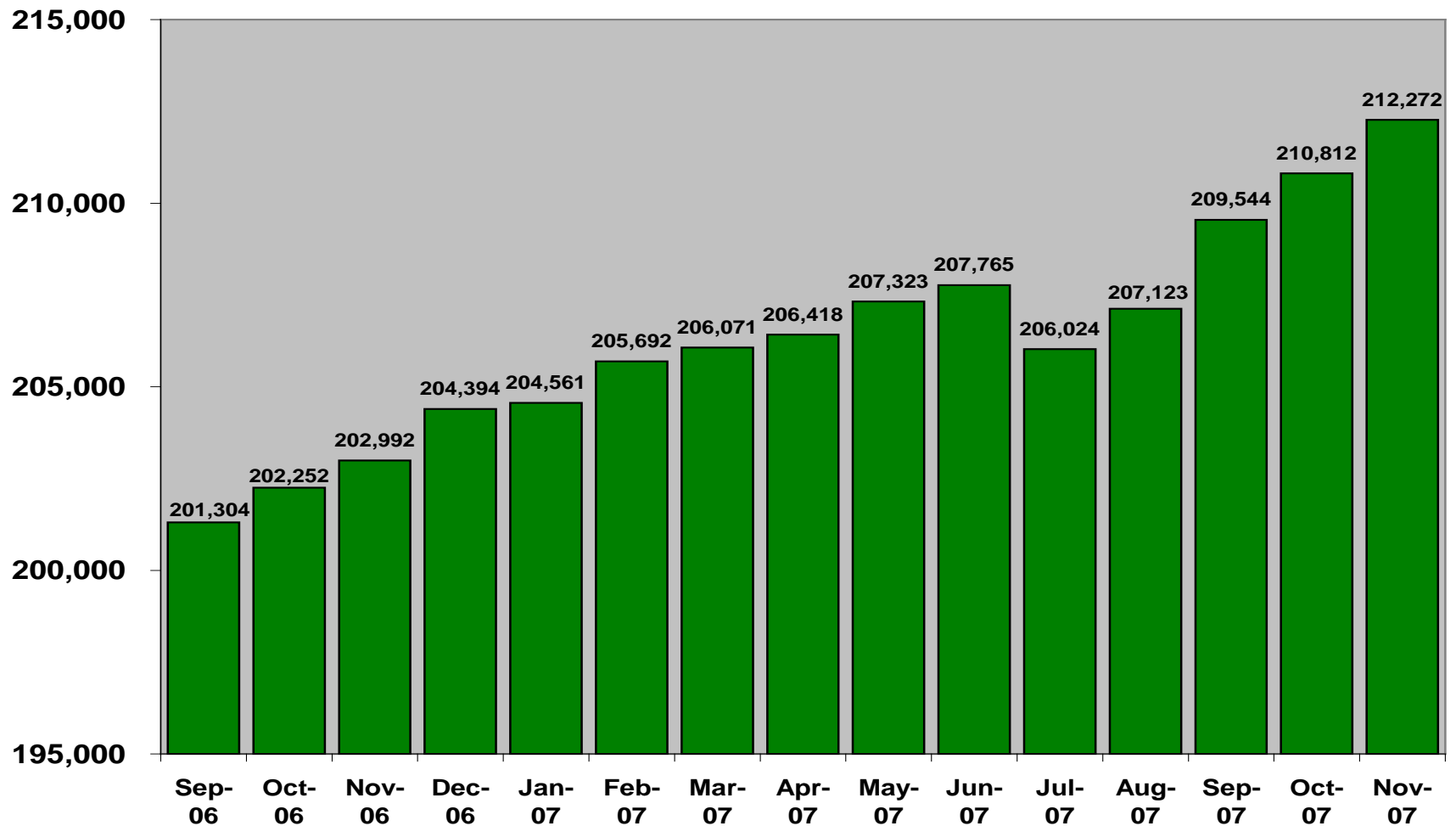
DSS and DCF report to the
Behavioral Health Partnership
Oversight Council

November 14, 2007

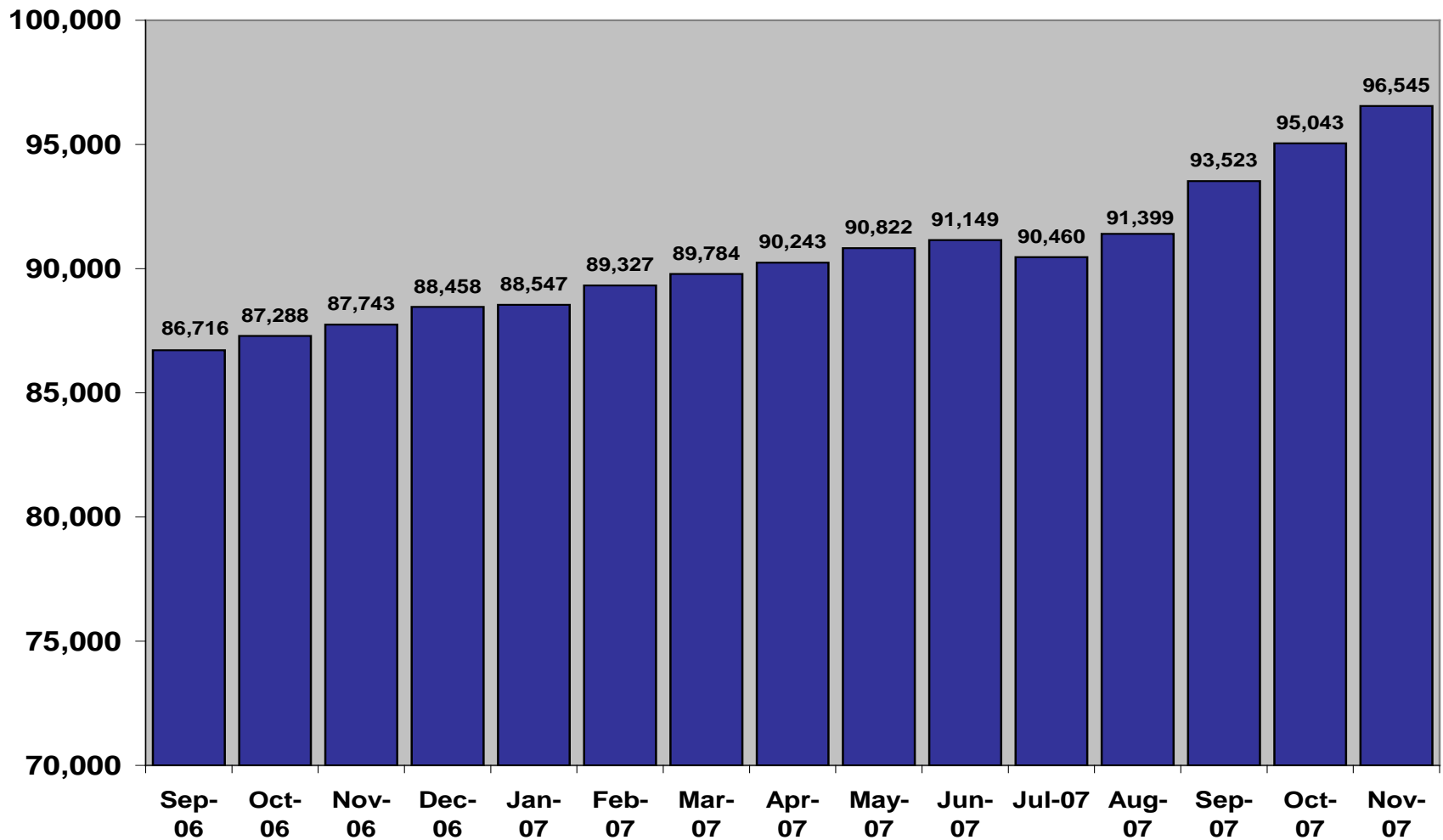
HUSKY A Enrollment Growth - All



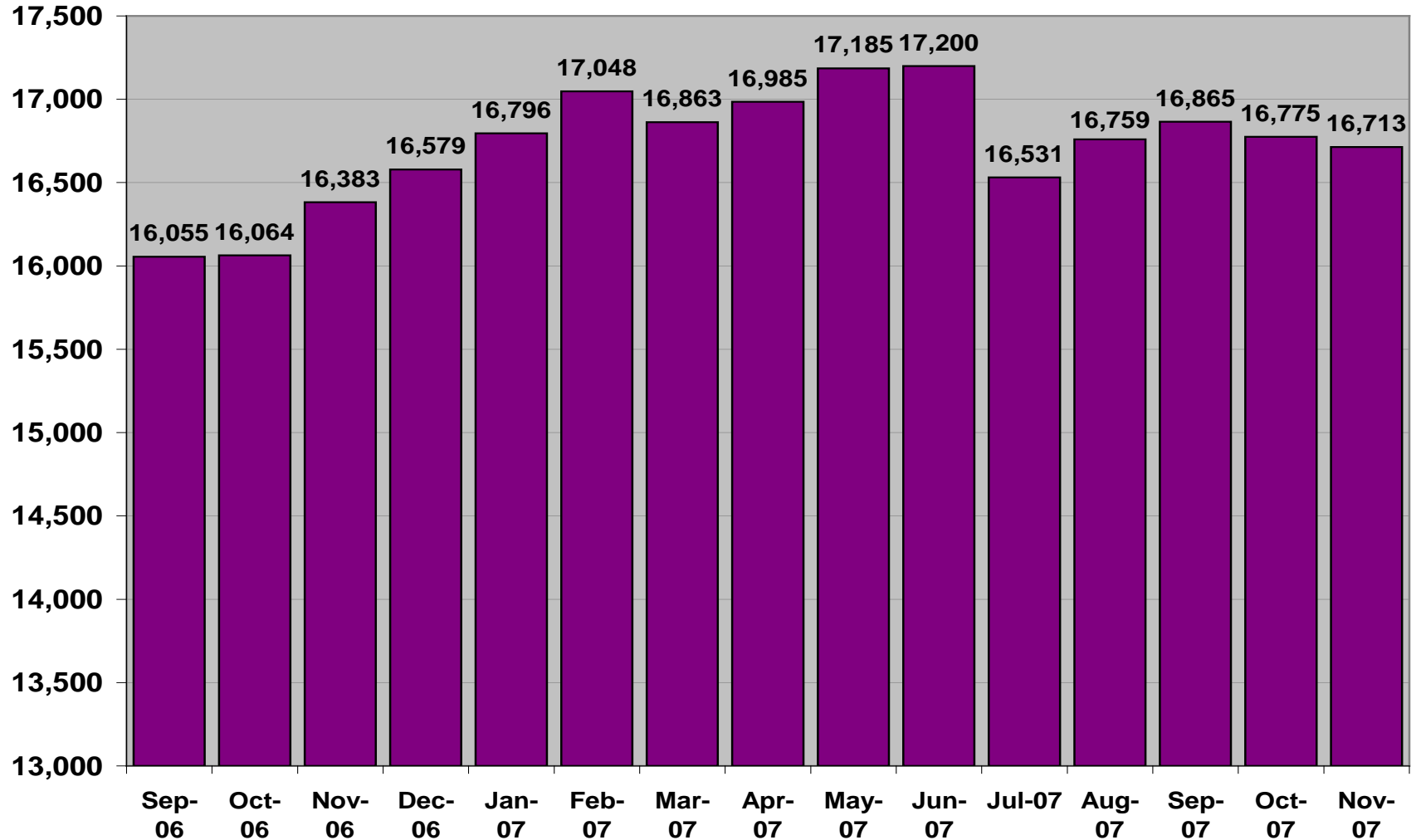
HUSKY A Enrollment Growth <19



HUSKY A Enrollment Growth Adults



HUSKY B Enrollment Growth



CT BHP Expenditures – SFY07

- Claims paid by EDS
- HUSKY A SFY07 = \$94,563,848
- HUSKY B SFY07 = \$ 3,389,493
- Total for SFY07 = \$97,953,341

Note: Excludes state operated facilities

CT BHP Expenditures – Q1 SFY08

- Claims paid by EDS
- HUSKY A Q1 SFY08 = \$24,488,209
- HUSKY B Q1 SFY08 = \$ 820,368
- Total for Q1 SFY08 = \$25,308,577

Note: Excludes state operated facilities

CT BHP HUSKY A SFY08
Expenditures – 1st QTR SFY08

Hospital Inpatient	\$ 8,177,506
Hospital Outpatient	\$ 2,126,631
Physician	\$ 172,462
Clinic	\$ 10,226,286
Home Health	\$ 417,317
Alcohol and Drug	\$ 645,407
Other Practitioner	\$ 2,722,599

CT BHP HUSKY B SFY08
Expenditures – 1st QTR SFY08

Hospital Inpatient	\$	229,450
Hospital Outpatient	\$	124,092
Physician	\$	5,810
Clinic	\$	328,180
Home Health	\$	6,325
Alcohol and Drug	\$	14,040
Other Practitioner	\$	112,472

DCF Quarterly Payments

July – September CY07

Residential Treatment Center:	\$14,190,032
Therapeutic Group Home:	\$9,953,157
PASS Group Home :	\$1,764,008

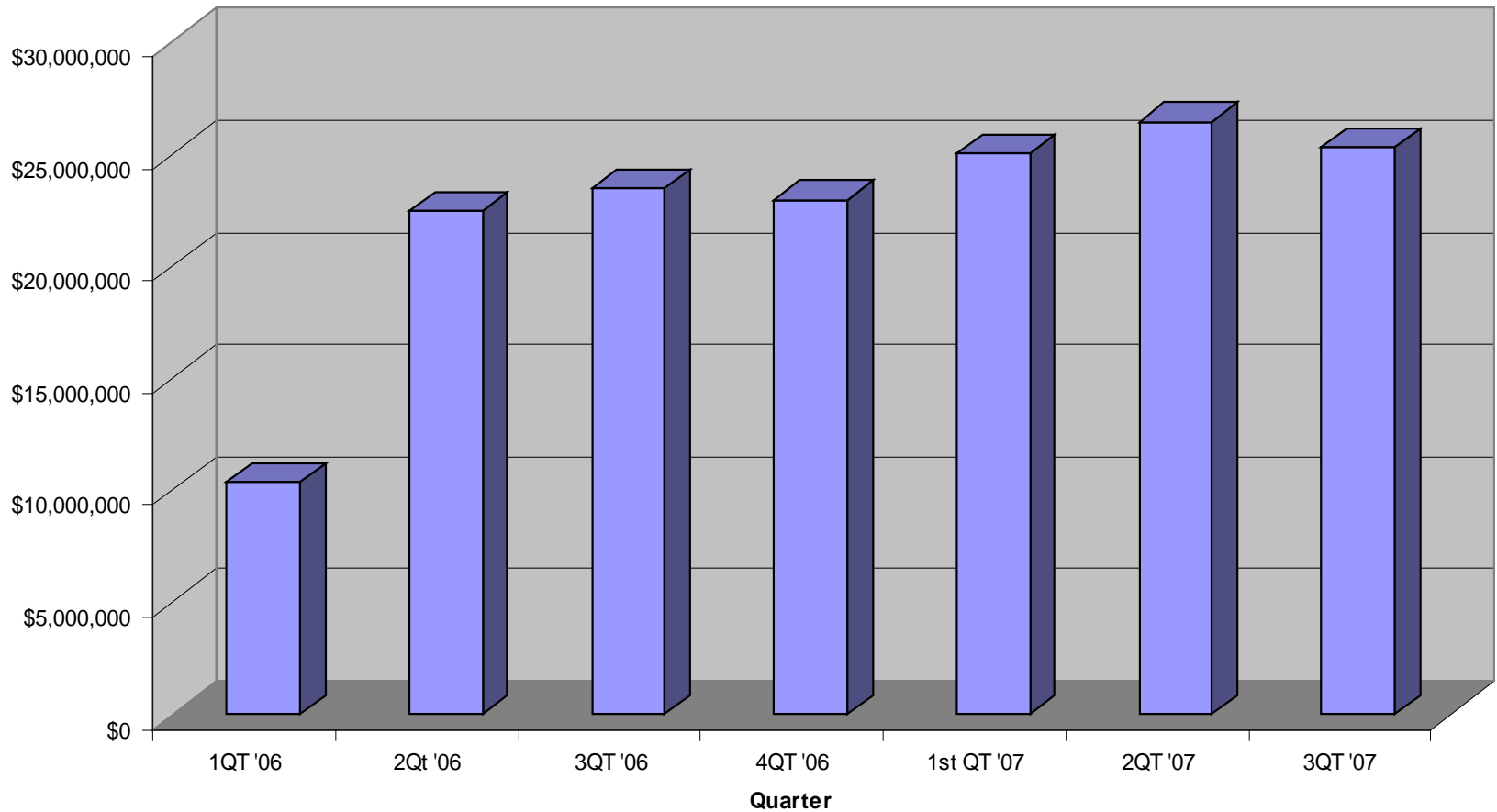
Connecting Authorizations to Payment

Residential Treatment

- Currently, the authorization process for Residential Treatment Centers and Group Homes is separate from the DCF payment process
- DCF is looking to connect the two systems
- Departments are seeking provider input
- Potential focus of the Provider Subcommittee?

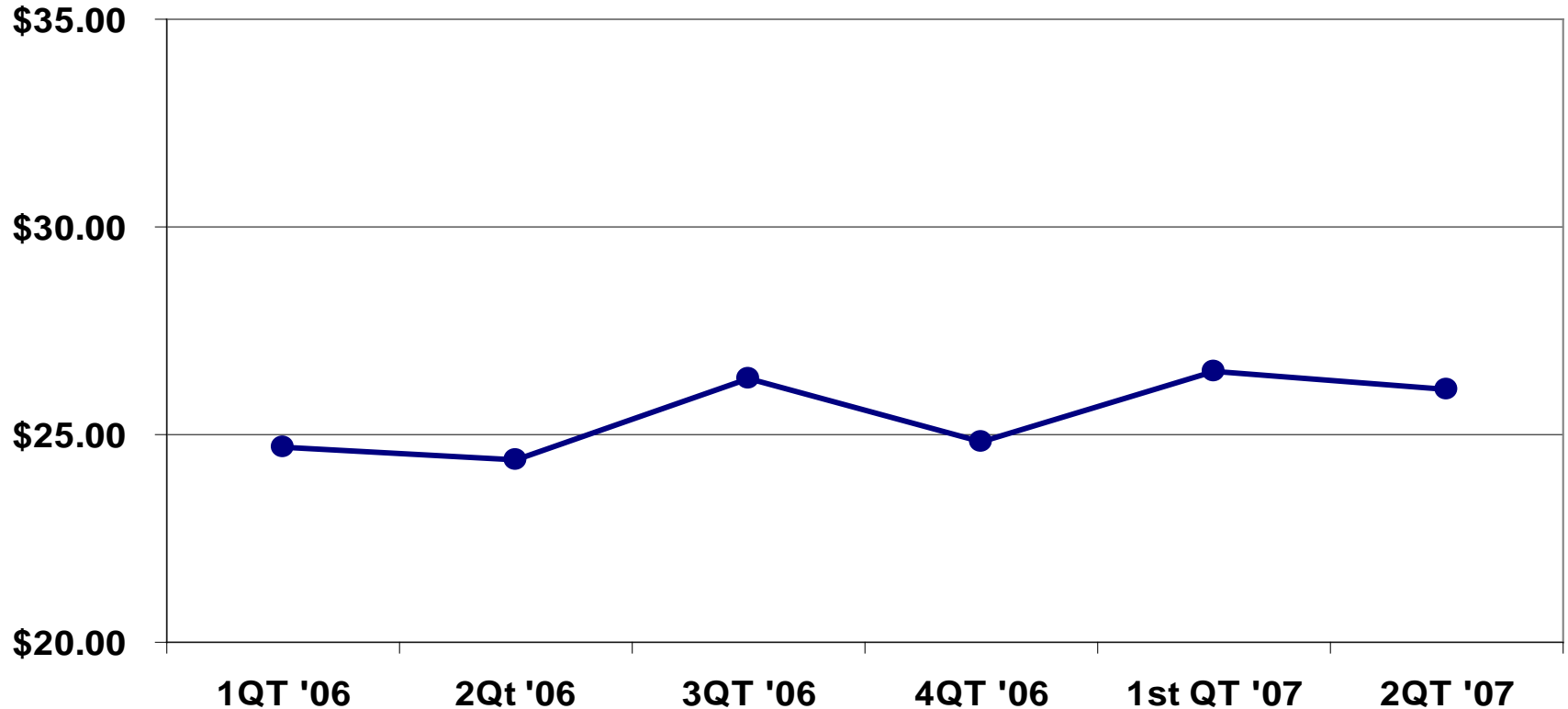
CT BHP HUSKY A & B

Expenditures by Quarter



CT BHP PMPM by Quarter

DSS paid claims by Date of Service



Note: Reported expenditures are based on 120 days of claims run out after the close of the last quarter presented. The figures do not include an adjustment for IBNR (incurred but not reimbursed). An IBNR adjustment will be included in the future when a CT BHP specific IBNR analysis has been completed.

CT BHP PMPM by Quarter

Estimated trend - Jan-June CY06/CY07

	Q1,2 '06	Q1,2 '07	% Change
CT BHP HUSKY A and HUSKY B DOS \$	\$ 46,586,931	\$ 49,412,591	6.07%
HUSKY A Enrollment (member months)	1,807,712	1,777,702	-1.66%
HUSKY B Enrollment (member months)	90,376	102,073	12.94%
HUSKY A and HUSKY B Enrollment	1,898,088	1,879,775	-0.96%
CT BHP HUSKY A and HUSKY B DOS PMPM	\$24.54	\$26.29	7.10%

Note: Estimated trend will be adjusted in future reports to reflect IBNR

Enhanced Care Clinics

- Primary care – behavioral health coordination policy draft is under review by Provider Advisory Subcommittee
- New RFA released September 2007
- 27 letters of intent received
- 11 applications received by deadline
- Review teams have been trained
- Qualification Decision Date – December

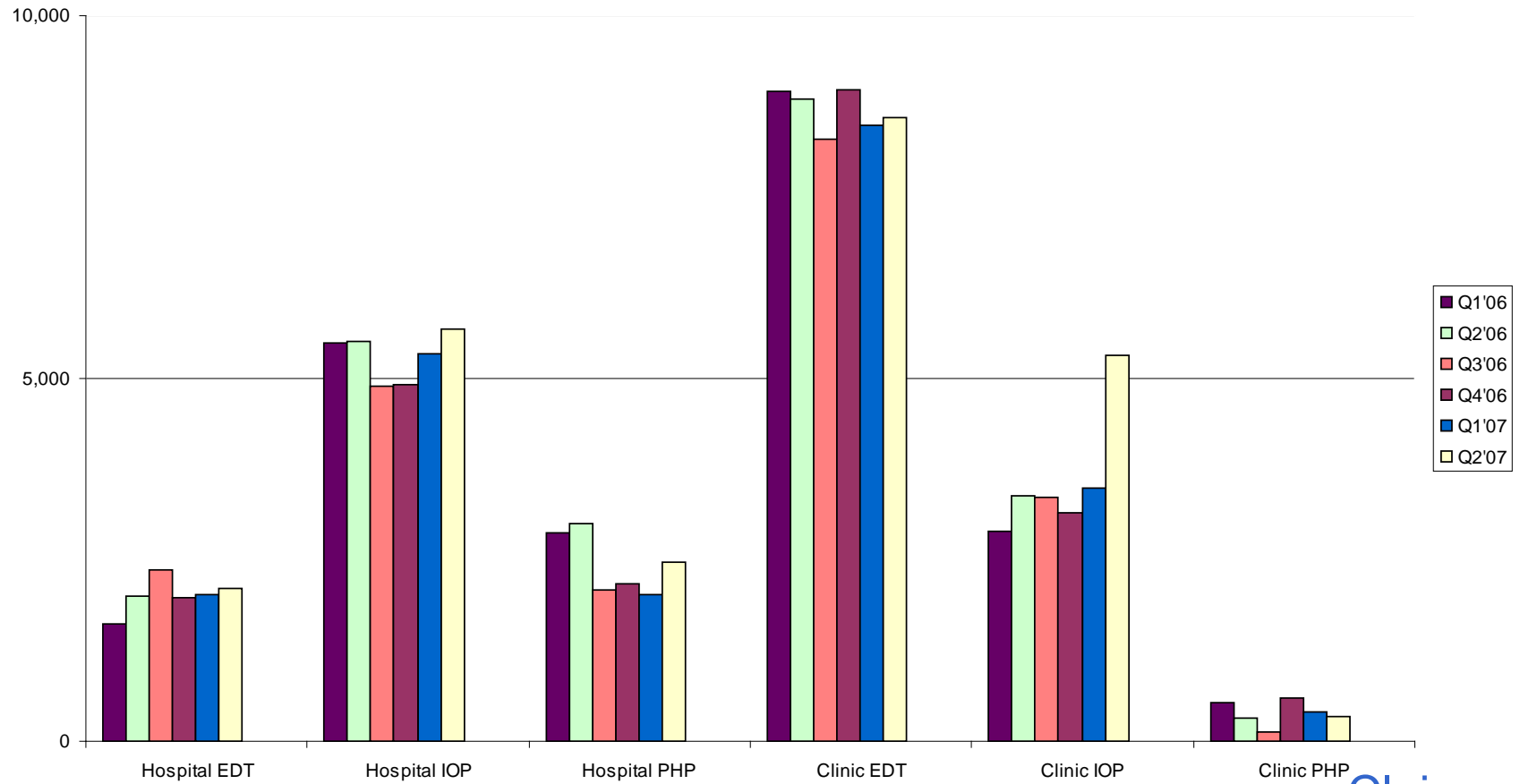
CT BHP Regulation

- Public notice in CT Law Journal: 10-23-07
- Effective date: 11-1-07
- Public hearing: 11-16-07, DSS, 9-11AM
- Deadline for comments: 11/23/07
- Other regulations underway:
 - child behavioral health community based rehabilitation services
 - Psychiatric residential treatment facilities (PRTF)

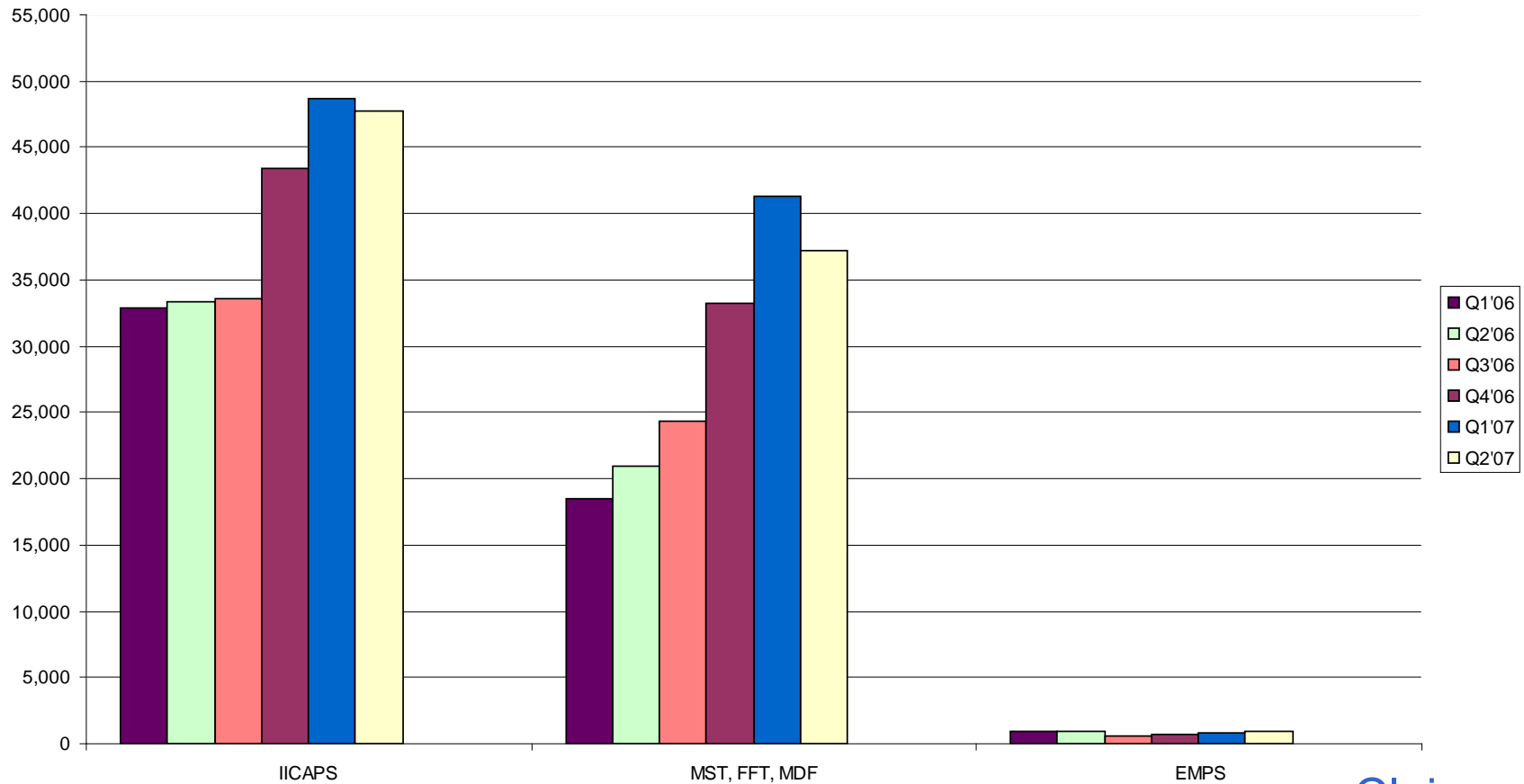
Ongoing Activities

- Rate setting
 - 2% pool
 - Departments have begun work with BHP OC ad hoc on inpatient for special populations
- Performance measurement project
 - Submitted mock report card, specifications, spreadsheets, etc. to CHCS on 10/31/07
 - Monograph and conference deferred
 - Contract with CHCS will be extended
 - First report card will be released 2008
- CT BHP 2006 Annual Report – Release Nov 2007

Intermediate Care Volume – Child

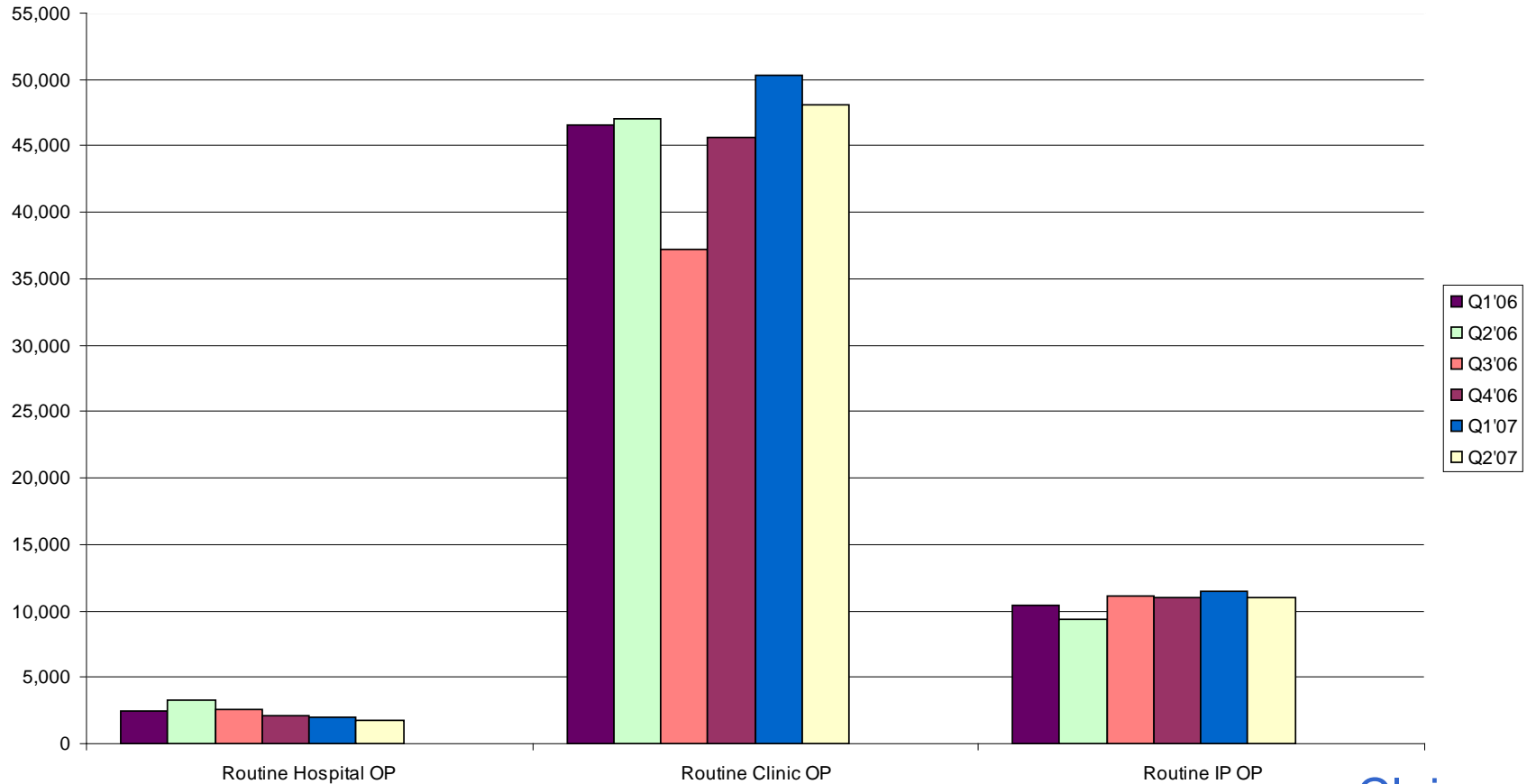


Home-Based Service Volume – Child



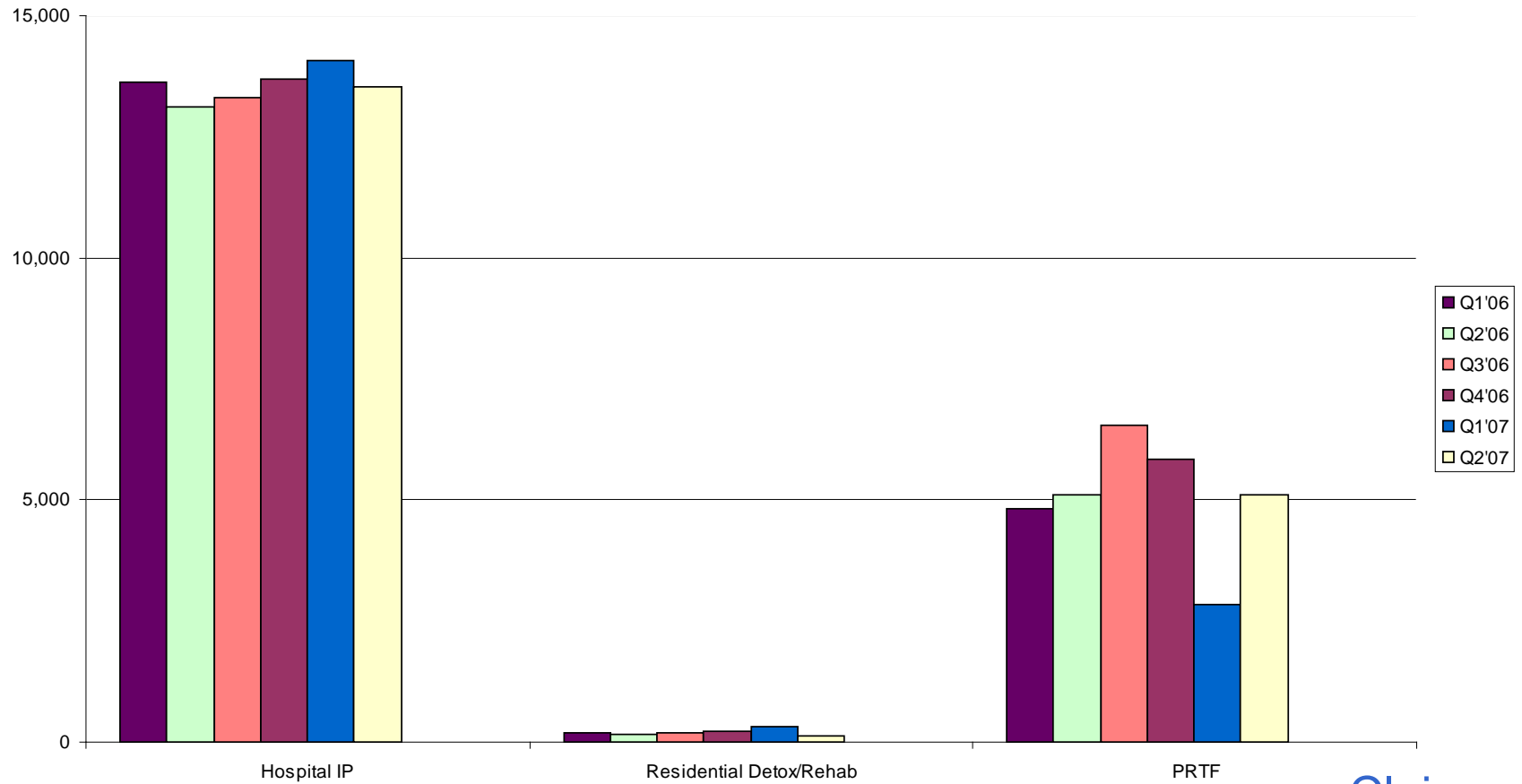
Claims

Outpatient Volume - Child



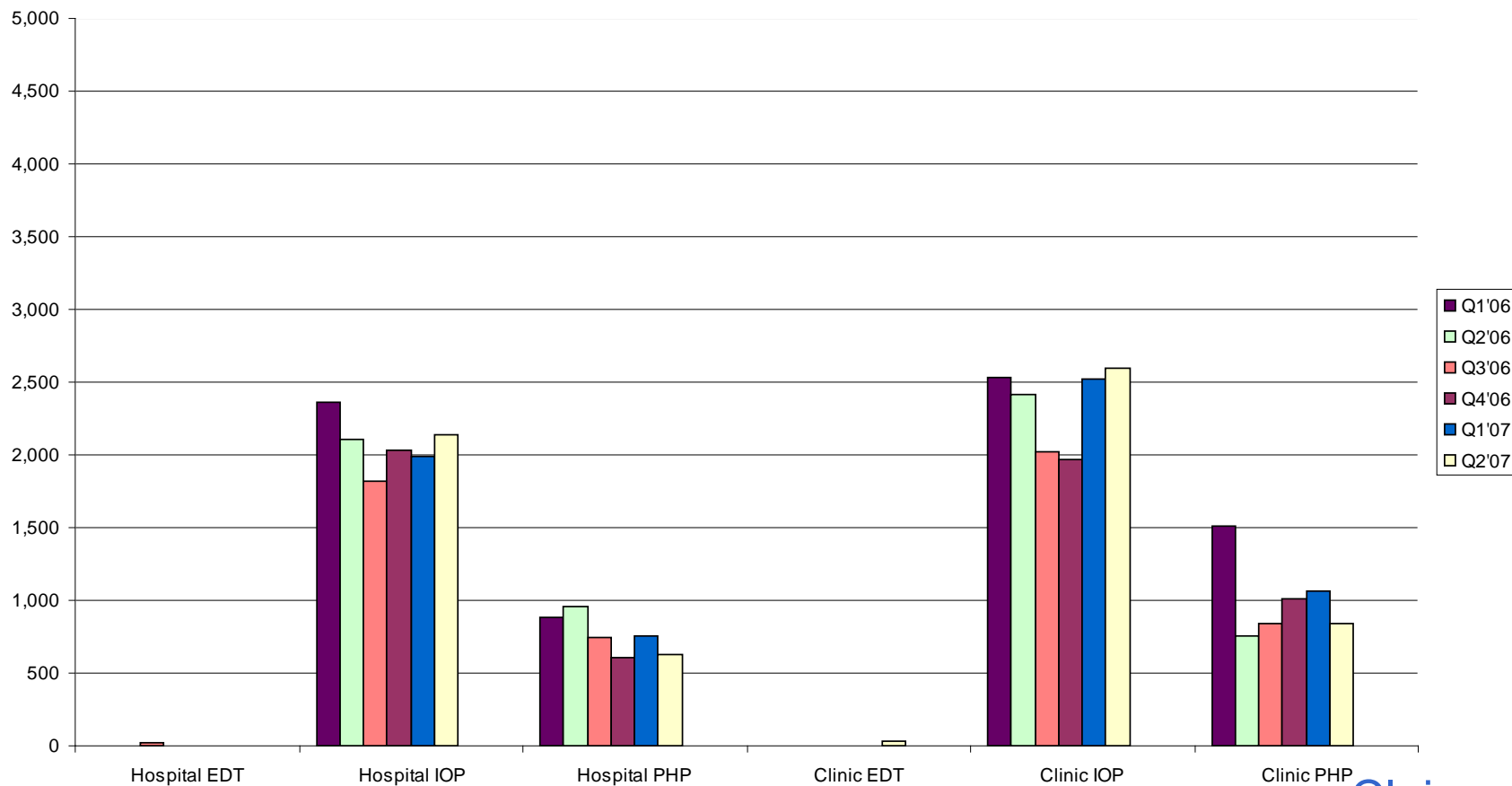
Claims

Inpatient Volume - Child

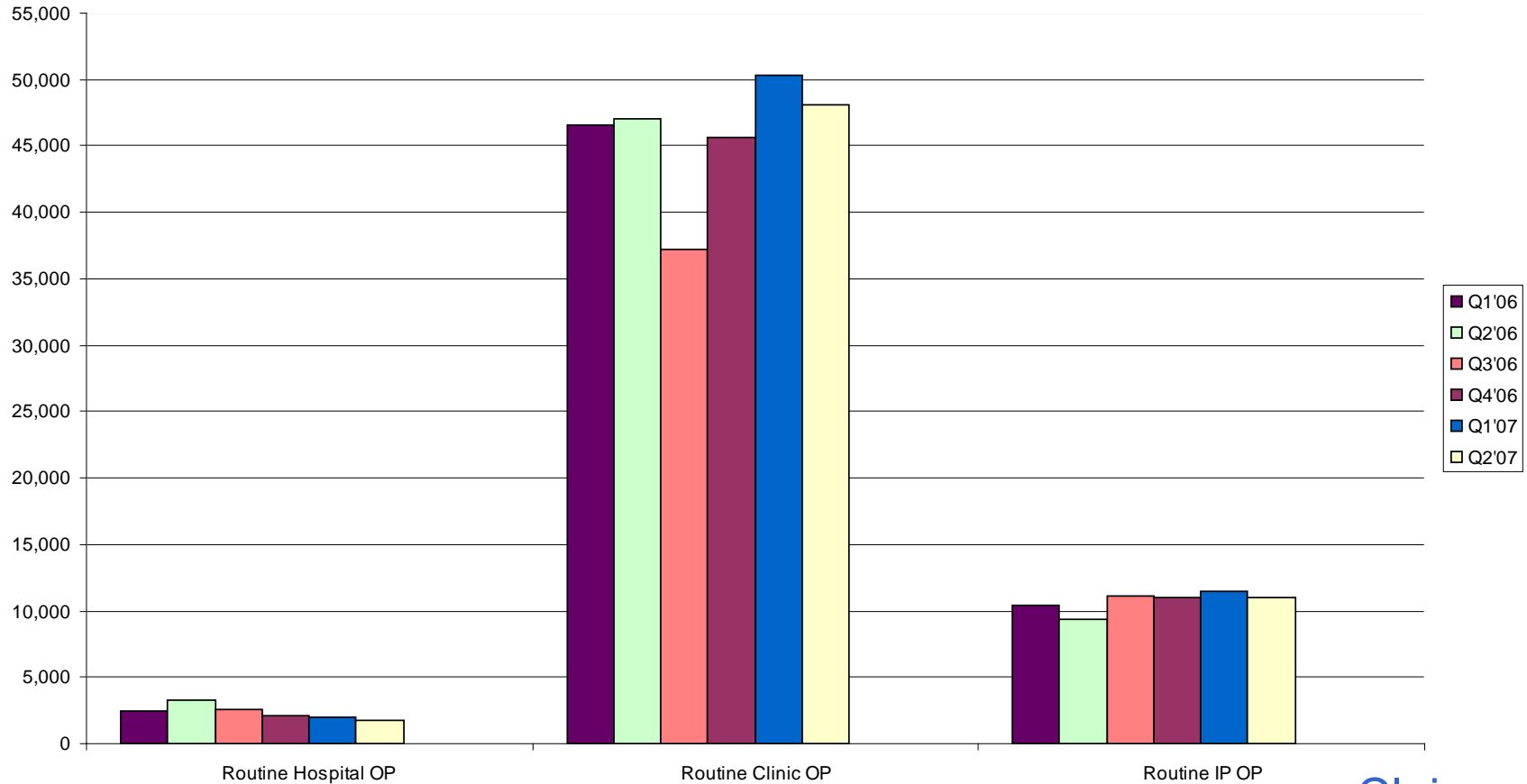


Claims

Intermediate Care Volume – Adult

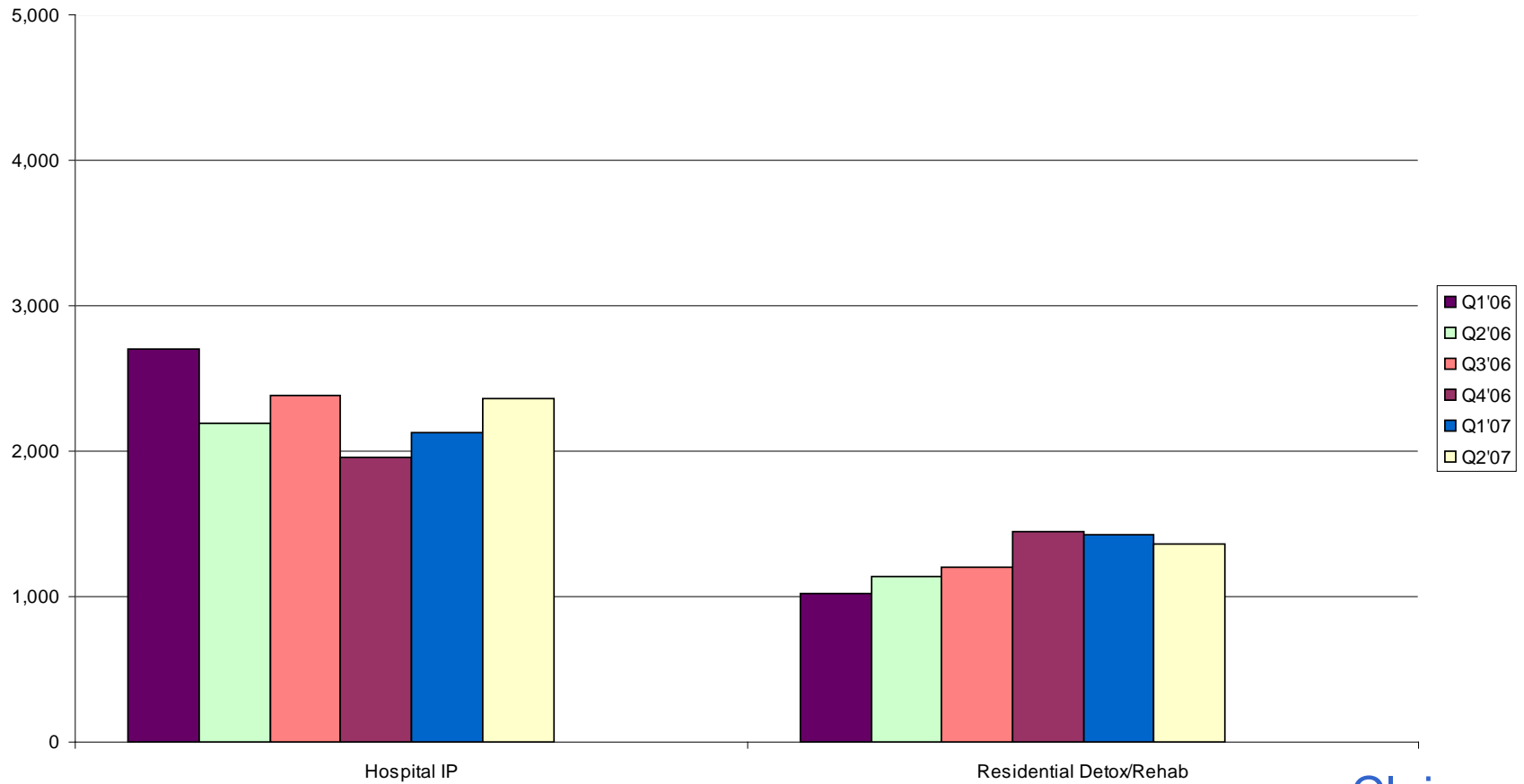


Outpatient Volume - Adult



Claims

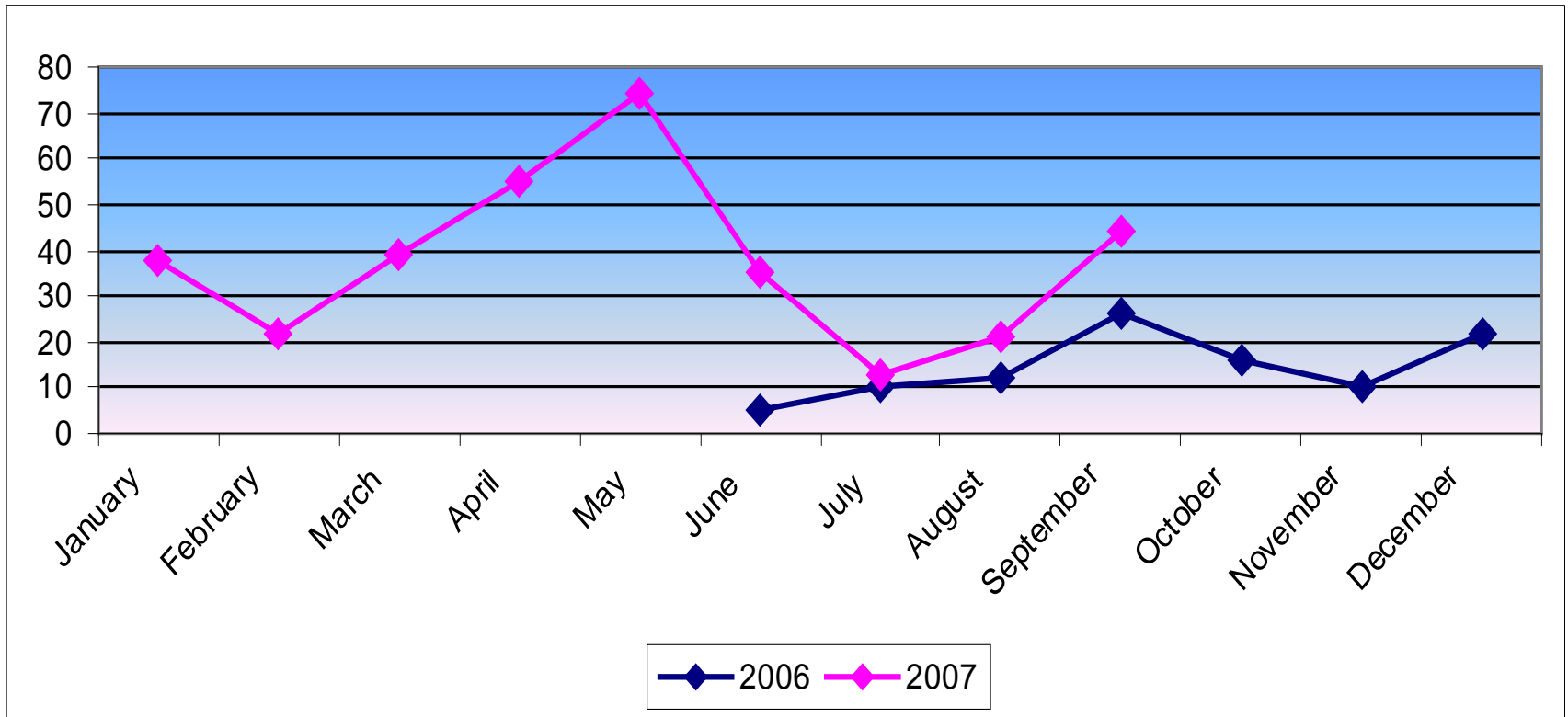
Inpatient Volume – Adult



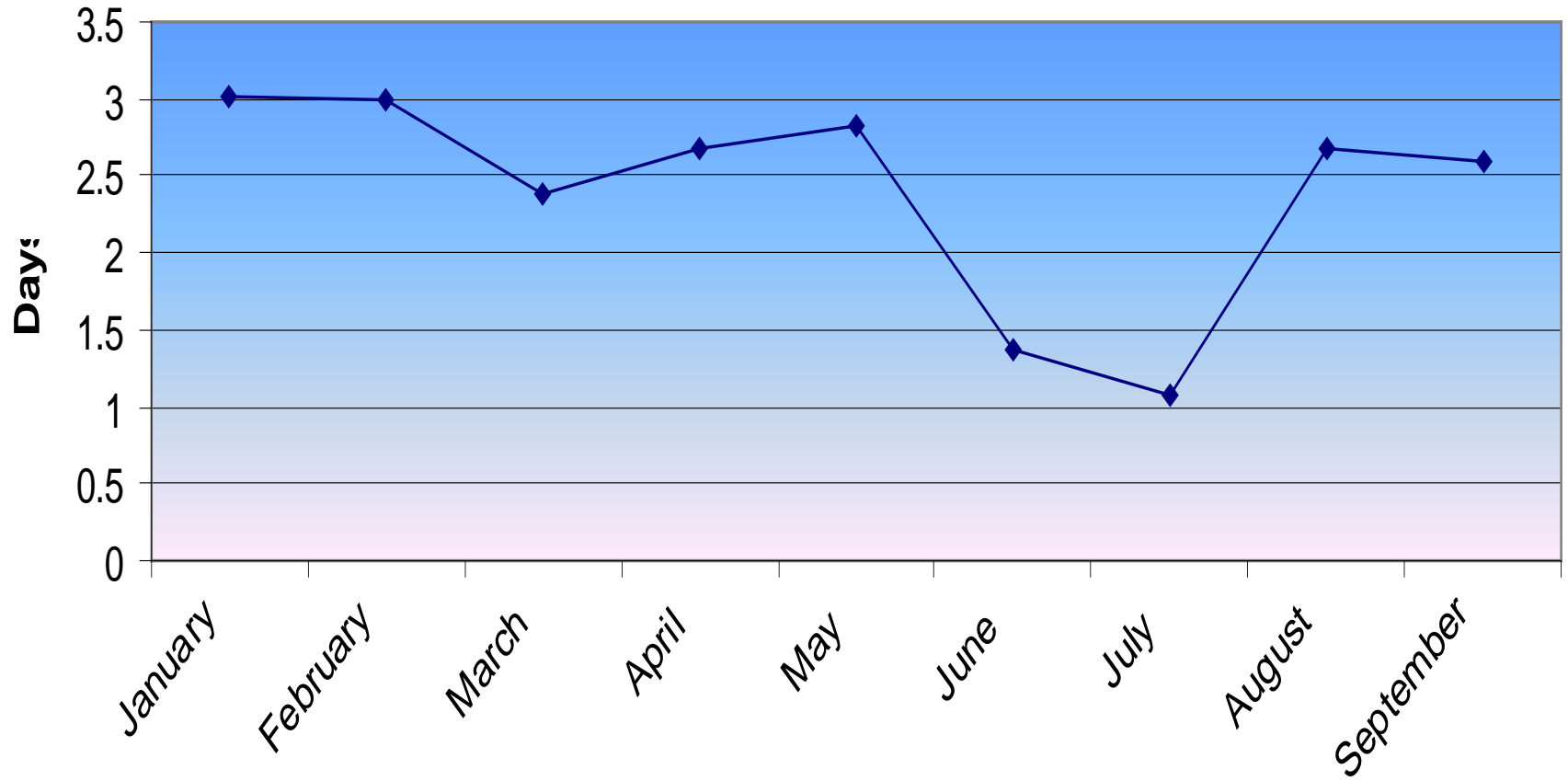
Claims

ED Discharge Delay

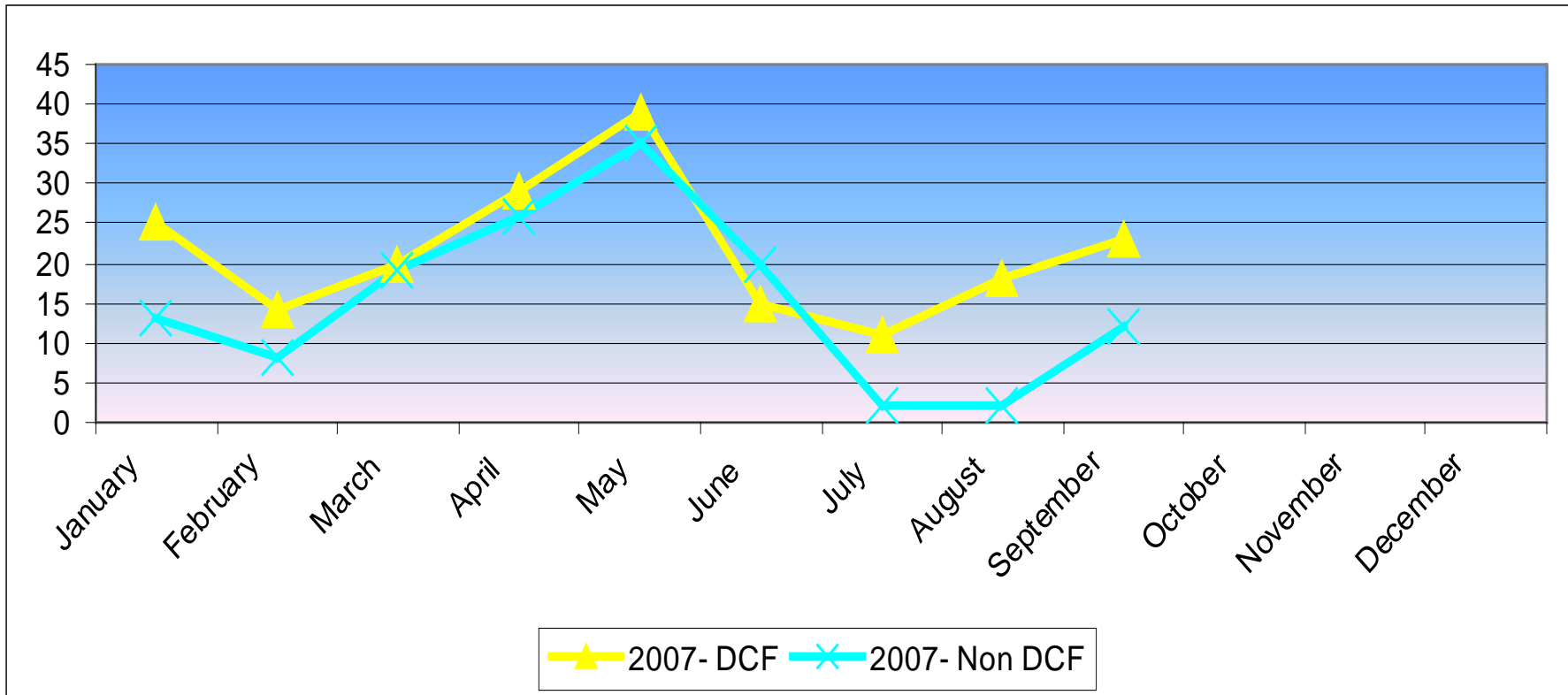
of Members in ED Delay Tracking Status Per Month



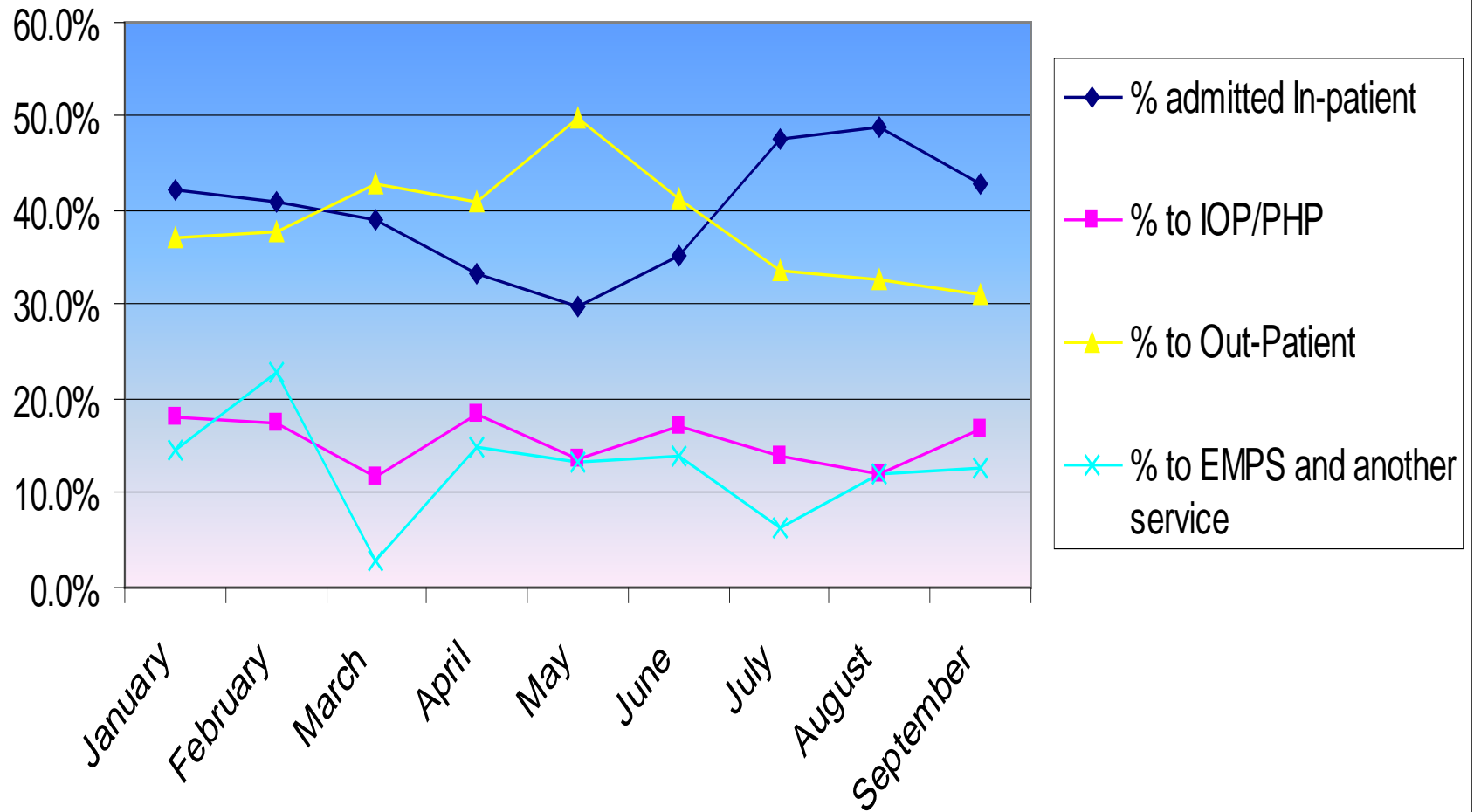
Average LOS in ED in 2007 (all ED's)



of Members in ED Delay Tracking Status per Month DCF vs. Non DCF



2007 CCMC ED Disposition Data



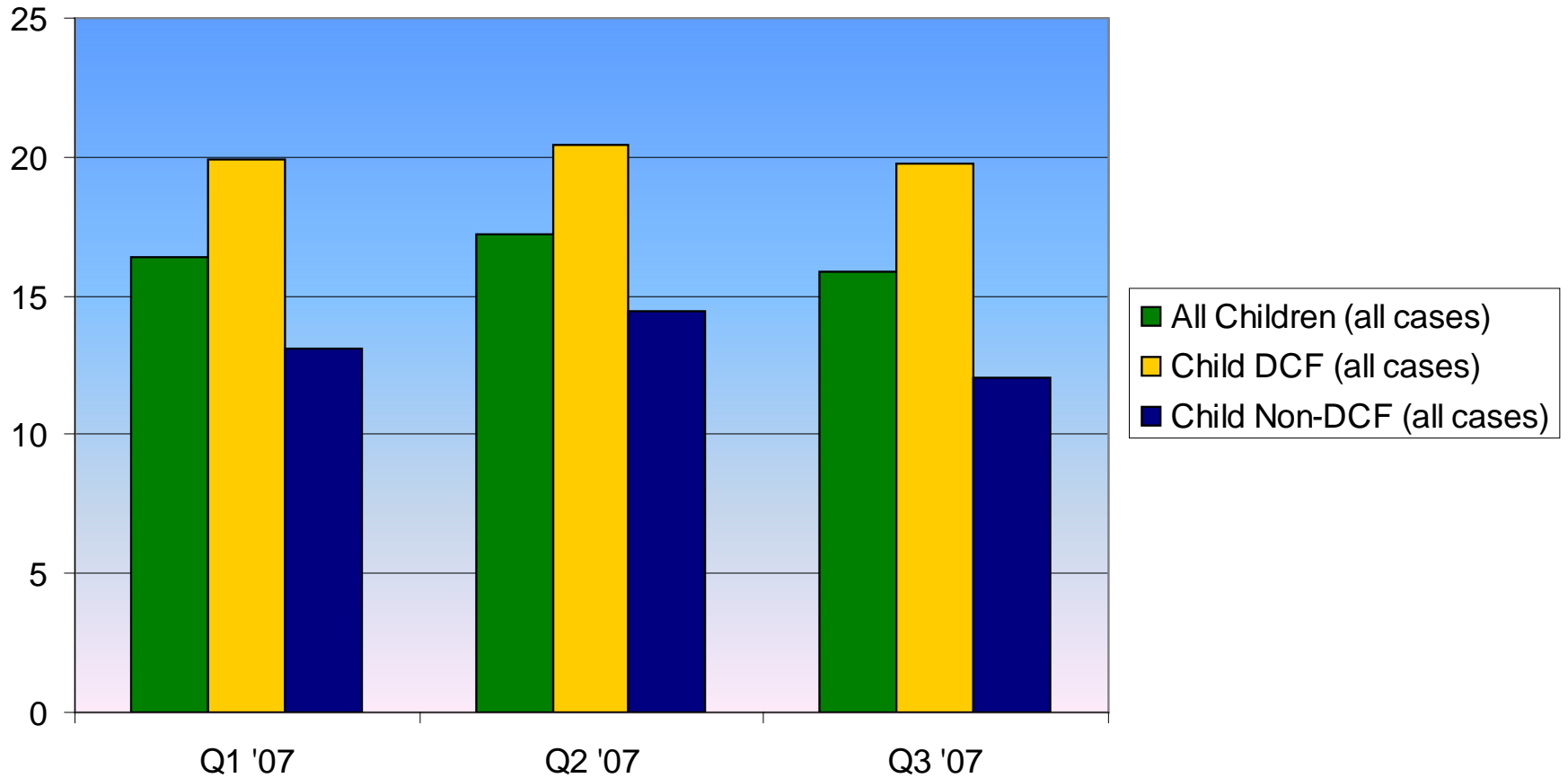
ED Delay 2007

January - September

- 361 Members were reported as Discharge Delay in EDs thru September
- Total days in ED = 853
- ALOS in ED for those members in DD = 2.36
- 53% were admitted to inpatient units
- 10% returned to the RTC/GH they were in at time of ED visit
- 25% returned to Bio/Foster/home
- 12% were placed in DCF Services

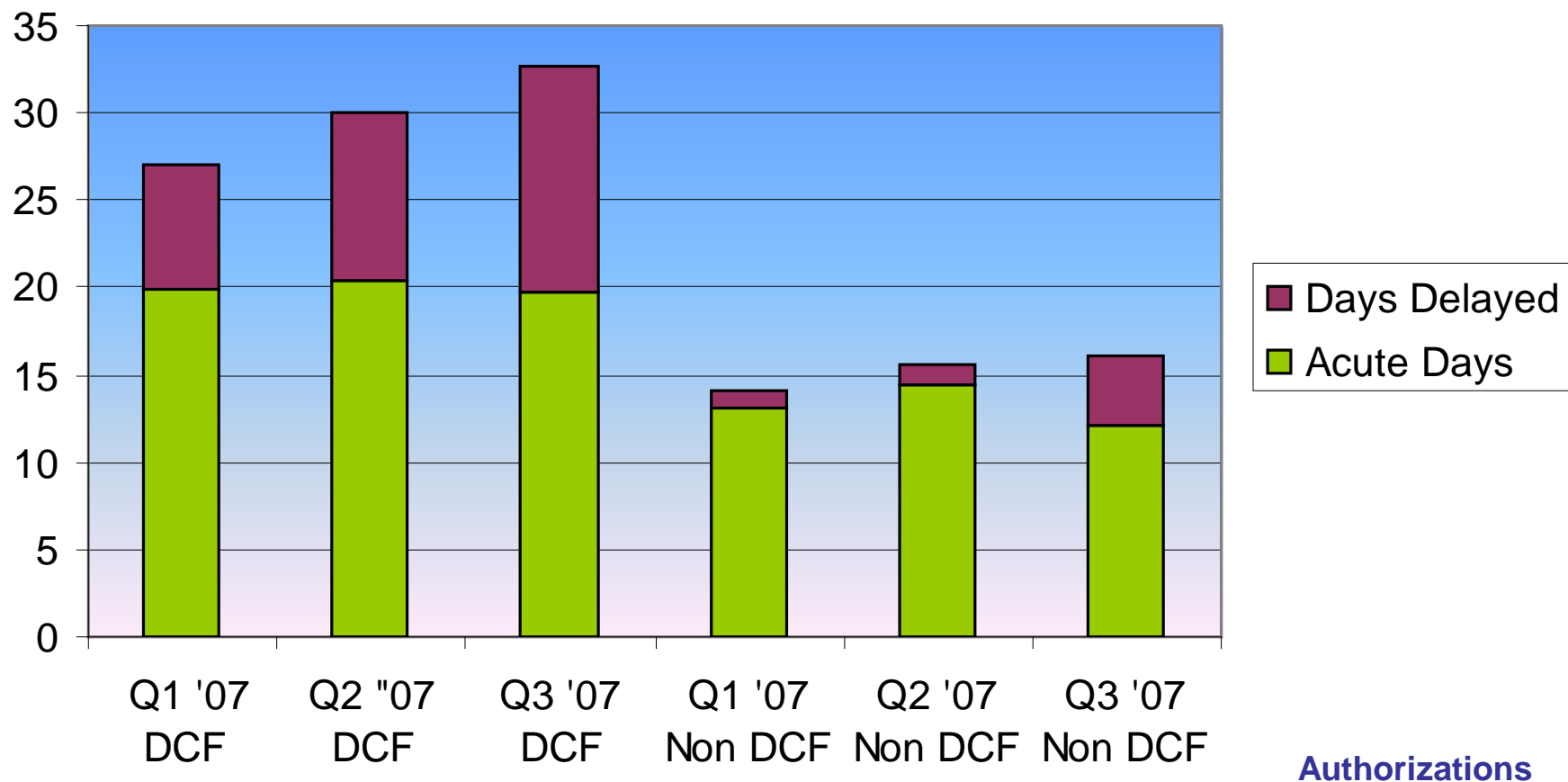
Inpatient Discharge Delay

Average Acute LOS (All Cases) Without Riverview

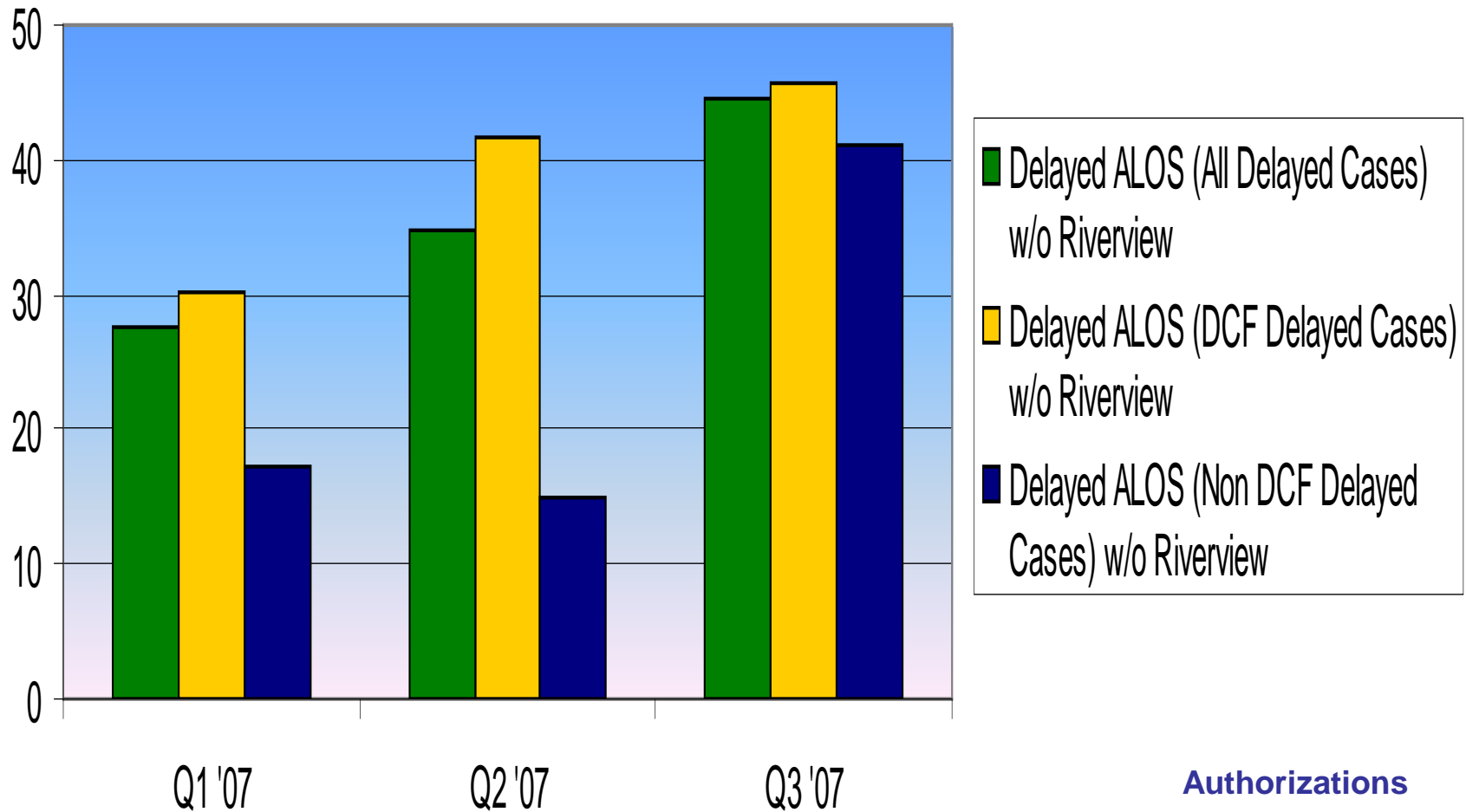


Authorizations

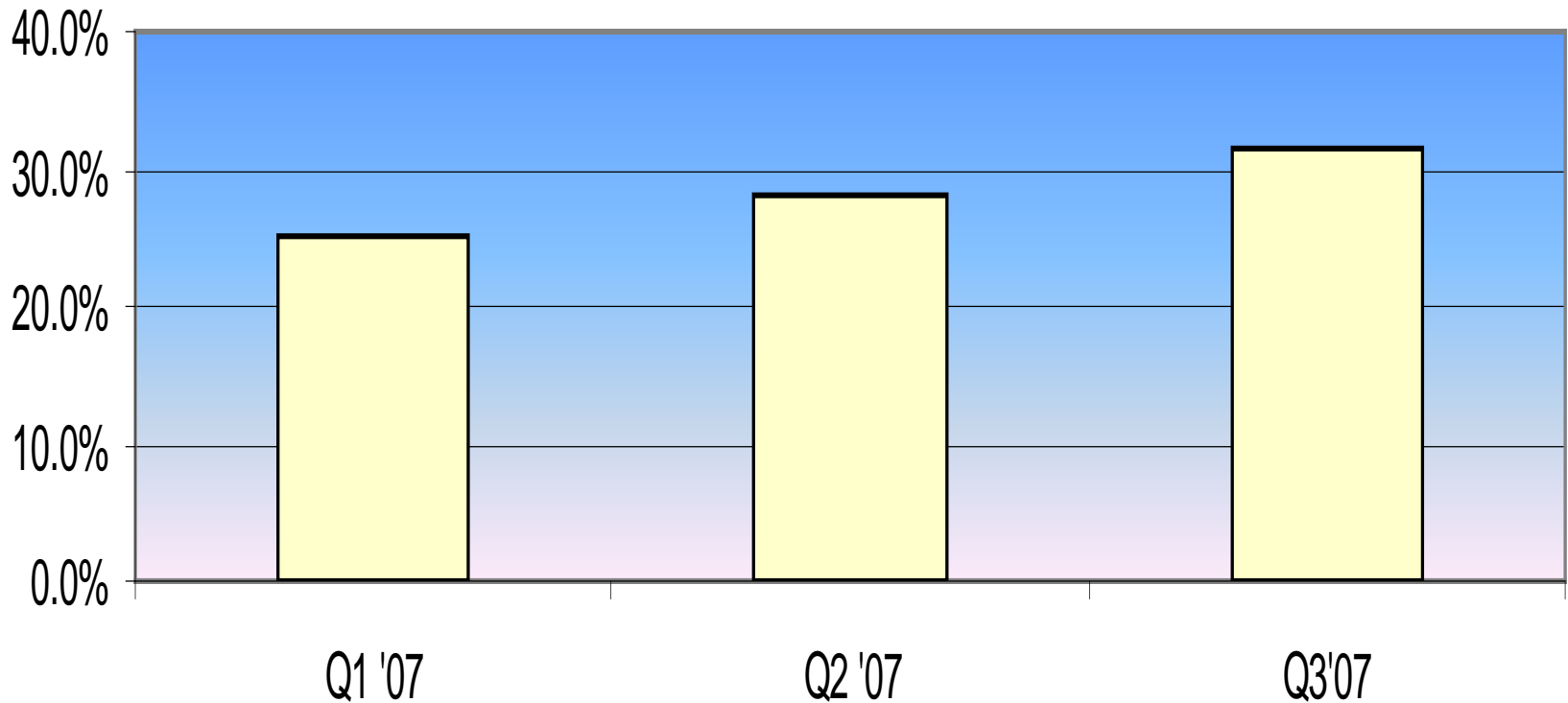
Average Length of Stay (IPF only) Acute vs. Discharge Delay, DCF vs. Non (All Cases)



Delayed ALOS, Delayed Cases only, IPF

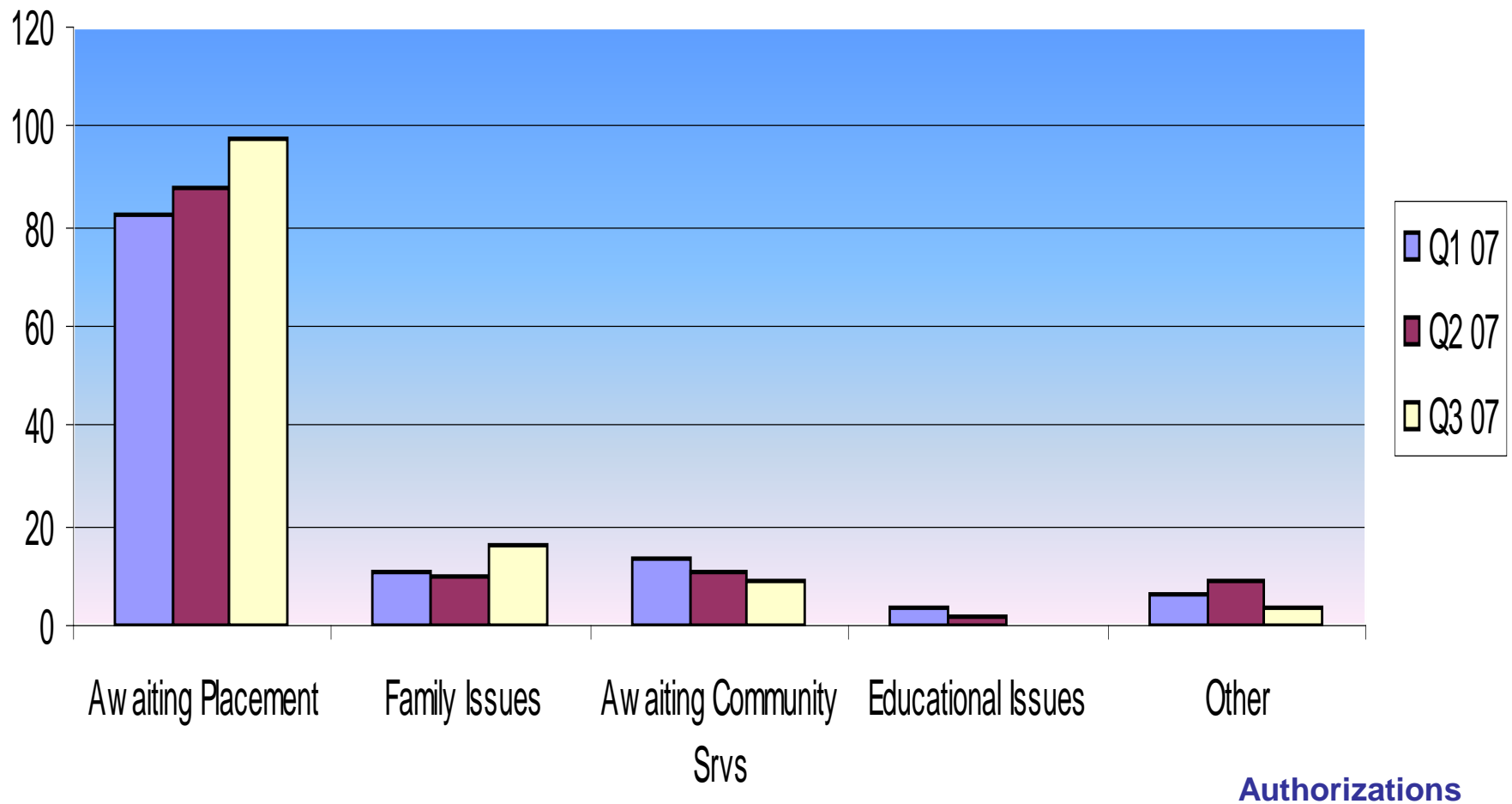


Percent of Days Delayed for Inpatient Psychiatry (age 0-18) Excluding Riverview

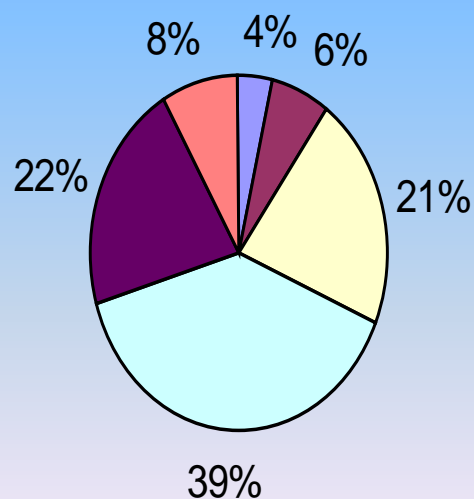


Authorizations

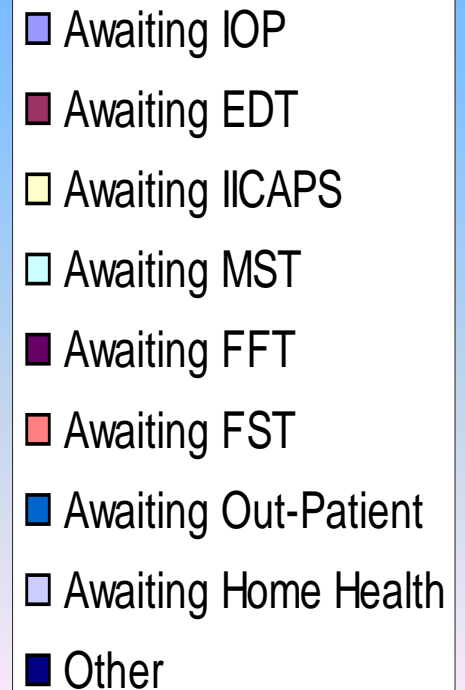
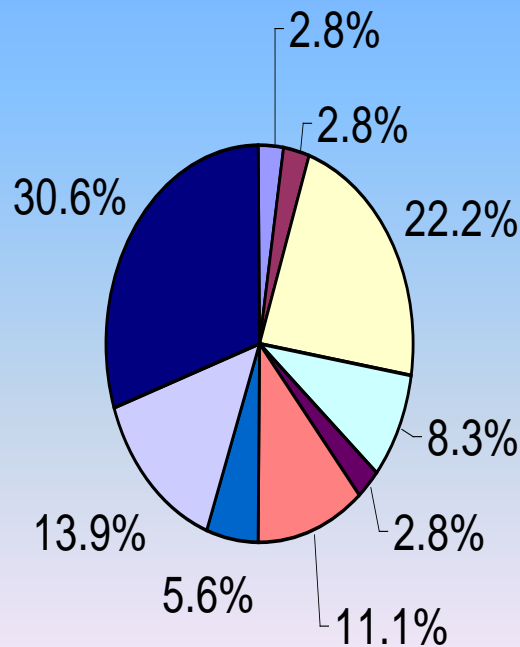
Inpatient Delay Reason Codes by Major Category (without Riverview)



Awaiting Placement Reasons
(Denominator is total # of children in "Awaiting Placement"
Delay Status) Excludes Riverview



Awaiting Community Services Reasons (Denominator is total # of children in "Awaiting Community Servcies" Delay Status) Excludes Riverview



Authorizations

Questions?